

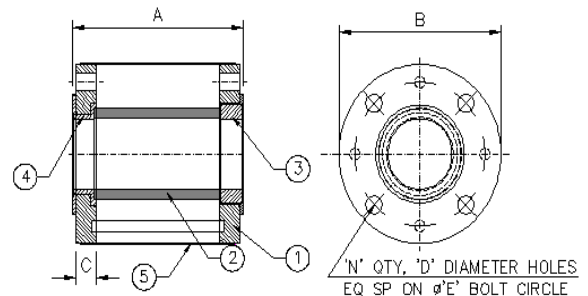
360° FULL VIEW SIGHT FLOW INDICATOR

Description :

Usmani valve 360° FULL VIEW SIGHT FLOW INDICATOR comes with a specially designed split bush arrangement. Housed inside a rigidly designed cage, the split bush design enables the glass to remain practically floating without any direct contact with the end flanges. This eliminates all chances of any kind of thrust force on the sight glass due to the pipe stresses and thereby a highly enhanced view glass life. Other special characteristics include all nonmetallic wetted parts and transparent protective shielding of the glass tube from the outside for observation safety.



BILL OF MATERIAL		
NO	ITEM	MOC
1	CAGE ASSLY	MS POWDER COATED/SS304/SS316
2	GLASS	BOROSILICATE
3	SPLIT BUSH ASSLY	PTFE/SS
4	BOT. WASHER ASSLY	PTFE/SS
5	SAFETY SHIELD	POLY-ACRALIC



Available Sizes:

15,20,25,40,50,65,80,100,125 & 150 NB

As standard size.

End Connections: Flanged to ANSI 150 class.

Limiting conditions :

Max. Operating pressure – 7 kg/cm².

Max Temperature – 200 °C.

SIZE	DIMENSIONS in mm					
	A	B	C	D	E	N
1/2"	176.2	88.9	11.1	15.9	60.3	4
3/4"	179.4	98.4	12.7	15.9	69.8	4
1"	182.6	107.9	14.3	15.9	79.4	4
1.5"	189.0	127.0	17.5	15.9	98.4	4
2"	192.0	152.4	19.0	19.0	120.6	4
3"	201.6	190.5	23.8	19.0	152.4	4
4"	201.6	228.6	23.8	19.0	190.5	8

True Definition Of Safety And Reliability

www.usmanivalves.com